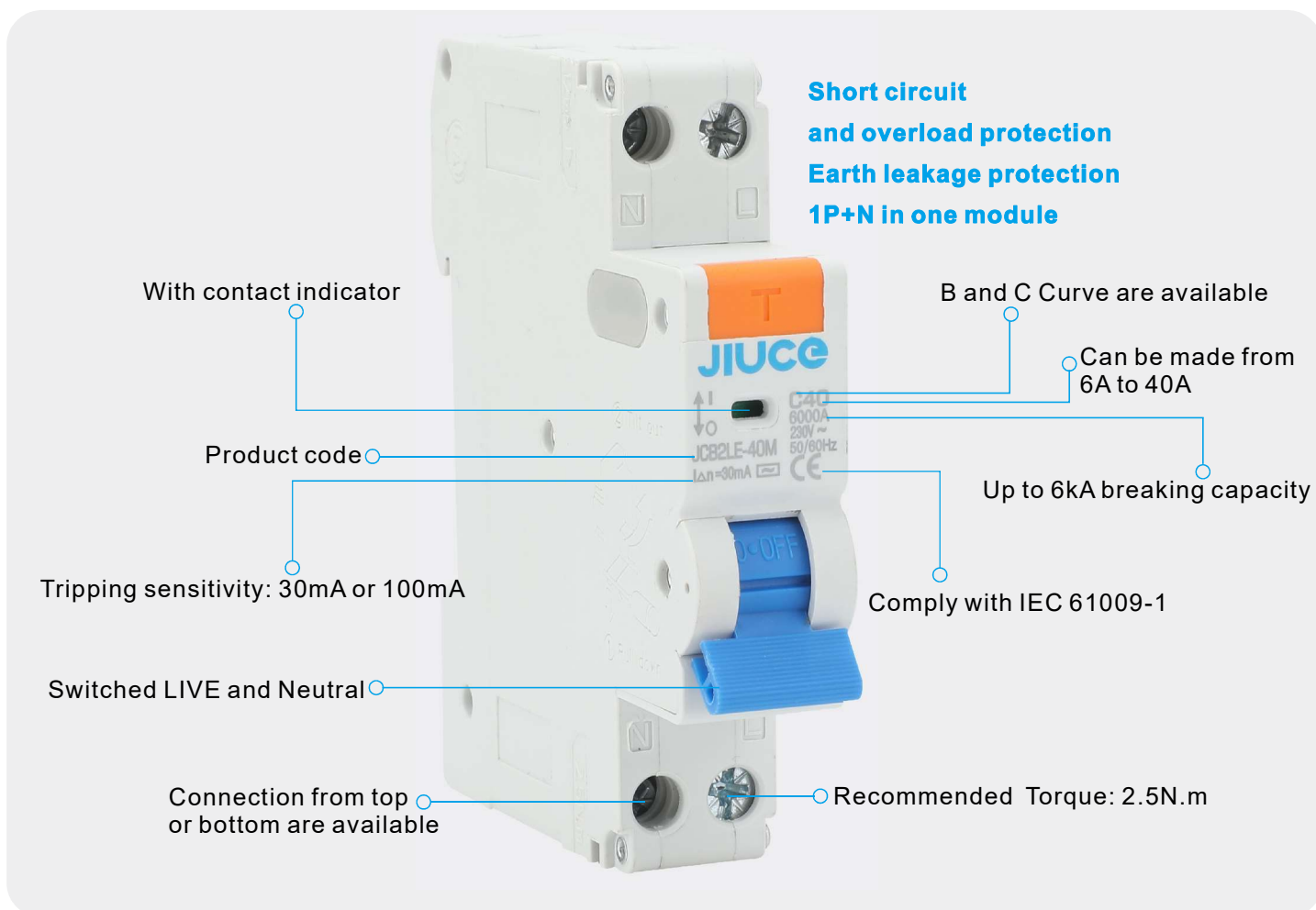
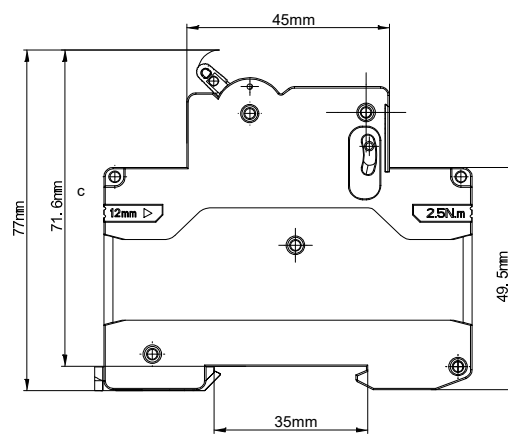
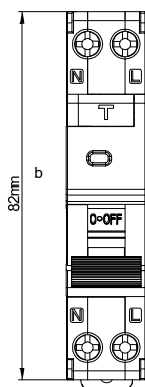
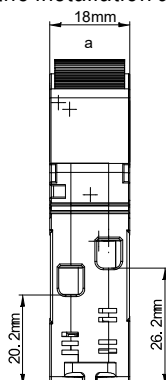
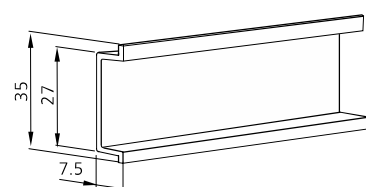


● JCB2LE-40M 1P+N mini RCBO single Module 6kA 1P+N 18mm



Features

- Electronic Type
- Earth leakage protection
- Overload and short circuit protection
- Breaking capacity 6kA
- Rated current up to 40A (available from 6A to 40A)
- Type A or Type AC are available
- Tripping sensitivity: 30mA, 100mA
- Connection from top or bottom are available
- Double pole switching for complete isolation of faulty circuits
- Neutral pole switching significantly reduces the installation and commissioning test time
- Complies with IEC 61009-1, EN61009-1



Application

The JCB2LE-40M RCBOs (residual current circuit breaker with overload protection) are suitable for consumer units or distribution boards, applied under occasions such as industrial, and commercial, high-rise buildings and residential houses

Product code	JCB2LE-40M	
	Standard	IEC61009-1 , EN61009-1
Electrical features	Rated current I_n (A)	6, 10, 16, 20, 25, 32, 40
	Type	Electronic
	Type (wave form of the earth leakage sensed)	A or AC are available
	Poles	1P+N in one module
	Rated voltage U_e (V)	230/240
	Rated sensitivity $I_{\Delta n}$	30mA, 100mA
	Insulation voltage U_i (V)	500
	Rated frequency	50/60Hz
	Rated breaking capacity	6kA
	Rated impulse withstand voltage(1.2/50) U_{imp} (V)	6000
	Dielectric test voltage at ind. Freq. for 1 min (kV)	2
	Pollution degree	2
	Thermo-magnetic release characteristic	B, C
Mechanical features	Electrical life	2, 000
	Mechanical life	10, 000
	Contact position indicator	Yes
	Protection degree	IP20
	Reference temperature for setting of thermal element(°C)	30
	Ambient temperature (with daily average $\leq 35^\circ\text{C}$)	-5...+40
	Storage temperation (°C)	-25...+70
Installation	Terminal connection type	Cable/Pin-type busbar
	Terminal size top/bottom for cable	16mm ² / 18-5 AWG
	Terminal size top/bottom for Busbar	10mm ² / 18-8 AWG
	Tightening torque	2.5 N*m / 22 In-lbs.
	Mounting	On DIN rail EN 60715 (35mm)
	Connection	From top or bottom are available


JCB2LE-40M
